

BLUELINE DESIGN



WhiteBarnStudios, designed by Mindi Sahner and home to BlueLine Design. Completed in 1993, the new multi-use building makes use of vernacular architecture, local materials and radiant floor heat and achieves accessibility thru creative landscape design.

Mindi Sahner, Principal

PROFESSIONAL CERTIFICATION

National Council for Interior Design Qualification NCIDQ #8881, received October, 1990
WBE (Woman Owned Business Enterprise) Certified

PROFESSIONAL EXPERIENCE

PRINCIPAL, BLUELINE DESIGN, Amherst, MA 1990-Present
Services Include: ADA and code compliant interior space planning and architectural design, construction administration and owner's representation, lighting and electrical design, specification of interior finishes and furniture, furniture plans including coordination of furniture to electrical/data locations, technology coordination, interior and exterior paint colors, signage, color coordination.
Project Types Include: Public and educational projects including public and private schools, libraries, public safety facilities; corporate, commercial and medical offices; corporate and retail bank facilities, restaurant and residential.
DIRECTOR OF INTERIOR DESIGN, KUHN RIDDLE ARCHITECTS, Amherst, MA 1988-90
DIRECTOR OF INTERIOR DESIGN, GILLEN KUHN RIDDLE & GRAY ARCHITECTS, Amherst, MA 1987-88, Founded the Interior Design Department for the 22 person firm.

EDUCATION

MS in INTERIOR DESIGN, University of Massachusetts, Amherst, MA. 1984-87

BLUELINE DESIGN

2



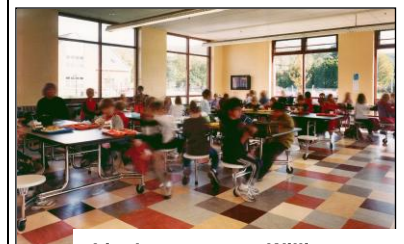
Kindergarten Classroom at Crocker Farm School

AWARDS:

- ✦ NESEA's **Northeast Green Building Award** for Sanderson Academy. Described by judges as a 'successful, healthy building, including a remarkable collection of green attributes, which teaches its inhabitants about the region and history through its form and materials.' 2001
- ✦ Williamstown Elementary School won the **Massachusetts Technology Collaborative Green Schools Award for High Performance Buildings**. 2002
- ✦ 2006: Three of our public schools, are among the 16 selected for awards in the MSBA (Massachusetts School Building Authority) first School Building Design Awards Program. Williamstown, New Hingham, and Crocker Farm Elementary Schools earned distinction over 57 other entries in the program. Williamstown Elementary School is now a **Model School in MSBA's Model School Program**. 2010

PUBLIC SCHOOLS

Sanderson Academy, Ashfield, MA, 1996-97
New Hingham El. School, Chesterfield-Goshen Reg. School District, Chesterfield, MA, 1997-98
Bernardston Elementary School, Bernardston, MA, 1997-98
Frontier Regional School, South Deerfield, MA, 1997-98
Warwick Elementary School, Warwick, MA, 1997-99
Houghton Elementary & Chocksett Middle School, Sterling MA, 1998-2000
Leverett Elementary School, Leverett, MA, 1999-2001
Crocker Farm School, Amherst, MA, 1999-2002
Williamstown Elementary School, Williamstown, MA, 1999-2002
Becket Washington School, Becket, MA, 2002-2003
Wire Village School, Spencer, MA, 2003-2004
Sherwood Middle School, Shrewsbury, MA, 2010-2013 (currently in Design Development)
North Adams Elementary School, North Adams, MA, 2010-2011 (currently in Feasibility Study)
Westfield Model Elementary School, Westfield, MA, 2011-2013 (currently in Design Dev.)
JR Briggs Elementary School, Ashburnham, MA, 2011-2013 (currently in Schematic Design)



Linoleum pattern, Williamstown

BLUELINE DESIGN

3



UMass Center for Research on Families, 2008
Finishes and Furniture achieve a flexible environment by BlueLine Design

PRIVATE SCHOOLS & COLLEGES

Berkshire School, Sheffield, MA, 1999-2008
Deerfield Academy, Deerfield, MA, 1987
Hampshire College, Amherst, MA, 1988
Holyoke Community College, Holyoke, MA, 1995
Milton Academy, Milton, MA, 1995
Mount Holyoke College, South Hadley, MA, 1987
Northfield Mount Hermon School, Northfield, MA, 1992-96
Phillips Exeter Academy, Exeter, N.H., 1995-96
Springfield Technical Community College, Springfield, MA, 1996
St. Paul's School, Concord, N.H., 1995-96
University of Massachusetts, Amherst, MA, 1989-90 & 1994-95, 2005-2006, 2008-2009
Westfield State College, Westfield, MA, 1994-97
Wilbraham & Monson Academy, Wilbraham, MA, 1997-98, 2005
Williston Northampton School, Easthampton, MA, 1996-2000 & 2011



PUBLIC

Town of Amherst MA, Amherst Police Facility, 1989
Offices of Hampshire Council of Governments, Old Courthouse, Northampton, MA, 2000
Penn South Recycles, NY, NY, 2008
Town of Westhampton, MA, Westhampton Memorial Library, 2010

BLUELINE DESIGN

CORPORATE OFFICES

Amerivest Corporation, Northampton, MA
Baybank Valley, Springfield, MA
Blair Cutting and Smith, Amherst, MA
Calypso Cards, Concord, MA
Coca Cola Bottling Company, Northampton and Greenfield, MA
Continental Cablevision, Springfield, MA
Dimension Cable, Amherst, MA
Esleeck Manufacturing Company, Inc., Turners Falls, MA
Hampshire County Retirement Systems, Northampton, MA
Millitech Corporation, South Deerfield, MA
Resnic, Beauregard, Driscoll & Waite, Holyoke, MA
Springfield Institute for Savings, Springfield, MA
Sunshine Art Studios, Springfield, MA

RETAIL BANKING

Bank of New England, Springfield, MA
Bank of Western Massachusetts, Northampton, MA
Springfield Institute for Savings, Springfield, MA

MEDICAL OFFICES

The Austen Riggs Center, Stockbridge, MA
Clionsky Office, Springfield, MA
Herscu Office, Enfield, CT
Freed Family Dentistry, Amherst, MA
MVA Center for Rehabilitation, Campus Medical Building, Springfield, MA
Kasper, Weiss & Hamdani Surgical Associates, Springfield, MA
Neurosurgical & Neurological Group, Inc., Medical Pavilion, Springfield, MA
Valley Veterinary Hospital, Hadley, MA

CHURCHES

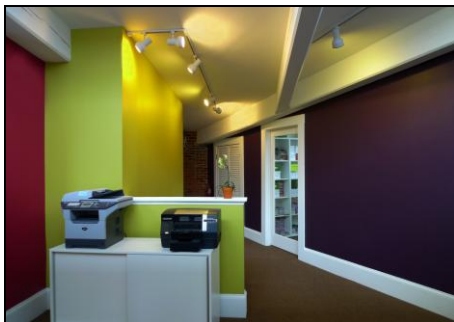
St. Brigid's Church, Amherst, MA
Sacred Heart Church, Springfield, MA

RETAIL & RESTAURANT

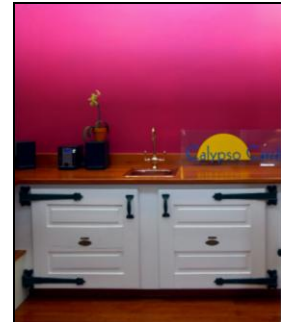
Brooks & Butterfield Day Spa, Northampton, MA
Goodies, Greenfield, MA

HOSPITALITY

UMass Lincoln Campus Center Hotel, Amherst, MA



Calypso Cards 2011



BLUELINE DESIGN

PUBLIC SCHOOL PROJECT DETAILS

5

Sanderson Academy, Ashfield, MA, 1996-97, with Margo Jones Architects: An Elementary School for Grades K-6. BlueLine Design has specified all finish colors and all furniture for the school, working closely with the Architect, the Building Committee and the Principal. Furniture was bid through the Hampshire County Purchasing Collaborative. *Reference: Ann Marie Mislak, Principal, 413 628 4664; Margo Jones, Margo Jones Architects, 413 773-5551*

Bernardston Elementary School, 1997-98, with Margo Jones Architects. Same scope of services as above. *Reference: Jack Killeen, Co-Chair Building Committee, 413 648-9703; Scott Lyman, Principal, 413 648-9356; Dayle Doiron, Superintendent's Office, 413 498-2911, Margo Jones, Margo Jones Architects, 413 773-5551*

Chesterfield-Goshen Regional Elementary School, Chesterfield, MA, 1997-98, with Margo Jones Architects. Same scope of services as above. *Reference: Bob Labrie, Co-Chair Building Committee, 413 858-5325; Mary Ellen Dunn, Principal, 413 296-0000, Margo Jones, Margo Jones Architects, 413 773-5551*

Frontier Regional School, 1997-98, with Alison Smith Design Consultants. Furniture and equipment for the 1000 student middle/high school, with 125 classrooms as well as support services space. Furniture & Equipment budget: \$850,000.00. *Reference: Dr. John Welch, Ed.D., Superintendent of Schools, 413 665-1155; Mary Ramon, Chair of Building Committee, 413 665-2898*

Warwick Elementary School, 1997-1999, for the town of Warwick. Bannister & Greenberg Architects. Involvement in spec writing for finishes and all finish colors. *Reference: Dayle Doiron, Building Committee, 413 498-2911*

Houghton Elementary and Chocksett Middle School, Sterling, MA, 1998-2000, with Lamoureux Pagano Architects. Specified furniture and equipment for both schools, which were combined in one building, but which had independent administrative offices and gyms, as well as two cafeterias sharing one kitchen. Budget: \$900,000.00. *Reference: John Gannon, Principal, 978-422-6132; Joyce Smith, member Building Committee, 978-368-0197*

Leverett Elementary School, Leverett, MA, 1999-2001, Bannister & Greenberg Architects. Involvement in spec writing for finishes and all finish colors, as well as furniture.

Crocker Farm School, Amherst, MA, 1999-2002, with Margo Jones Architects. Involvement in spec writing for finishes and all finish colors, as well as furniture specifications and procurement. *Reference: Paul Wiley, Principal, 413 256-6726 x4*

Williamstown Elementary School, Williamstown, MA, 1999-2002, with Margo Jones Architects. Involvement in spec writing for finishes and all finish colors, as well as furniture. Furniture & Equipment budget: \$450,000.00. *Reference: Rose Ellis, Superintendent, 413 458-5840*

Becket Washington School, Becket, MA, 2002-2003, Furniture specifications for \$150,000.00 budget. *Reference: Laura DuMouchel, Principal, 413 623-8757*

Wire Village School, Spencer, MA 2003-2004, with Lamoureux Pagano Architects. Furniture and Equipment specifications. \$850,000.00 Furniture & Equipment budget. Contract included receipt of furniture at the new School. *Reference: Principal, Paul Bedard: 508 885-8524*

Sherwood Middle School, Shrewsbury, MA, 2010-2013 (currently in Design Development) with Lamoureux Pagano Architects, Katie Crockett Project Architect. Furniture, Equipment and Technology services. 900 students. \$2,160,000.00 budget using MSBA guidelines.

North Adams Elementary School, North Adams, MA, 2010-2011 (currently in Feasibility Study) with Margo Jones Architects.

Westfield Model Elementary School, Westfield, MA 2011-2013 (currently in Design Development), with Margo Jones Architects, Furniture and Equipment services, 600 students, \$737,000.00 budget using MSBA guidelines. A new LEED and MSBA Model School based on the Williamstown Elementary School, completed in 2002 by BlueLine Design and Margo Jones Architects.

JR Briggs Elementary School, Ashburnham, MA, 2011-2013 (currently in Schematic Design), with Lamoureux Pagano Architects, Katie Crockett Project Architect. Furniture, Equipment and Technology services for 520 students, with a budget of 1.2 million dollars using MSBA guidelines.

BLUELINE DESIGN

PRIVATE SCHOOL & COLLEGE PROJECT DETAILS

BERKSHIRE SCHOOL, Sheffield, MA

Godman Dorm, 1999: Design and specifications for renovation, including all finishes, lighting, furniture for dorm rooms and lounge.

Berkshire Hall Classrooms, 1999&2001: Design and specifications for renovation of Classrooms and Bathrooms, including all finishes, lighting, furniture for the west wing containing three floors of classrooms. For the year 2001, design continued for further renovations to the east wing, and a renovation to the Lobby in 2002. Renovations in 2003 included the Office of College Counseling. For 2005, renovations include the 2nd Floor Theatre and 3rd Floor Classrooms.

Berkshire Hall Science Lab, 2004: Space Plan including architectural changes to an existing Lab, Finishes, Lighting & Furniture.

Stanley Dorm, 2000-2001: similar in scope to Godman Dorm.

Dewent Dorm, 2000: similar in scope to Godman Dorm

Deans Office, 2000: Furniture for the Waiting/Reception area of the Dean's Office and North Lounge

Eiper Dorm, 2002; similar to other dorms

Kellogg Hall, 2002: Lighting and Finishes for a new building to house Development Offices and a community room.

Office of College Placement, 2002: Spaceplanning, Lighting, Finishes and Furniture for existing offices in Berkshire Hall.

Office of Academic Support, 2003: Spaceplanning, Lighting, Finishes and Furniture to relocate to office currently used for Development.

Headmaster's Residence, 2003: Windowcoverings, Paint, Wallpaper and Furniture for new Headmaster.

Headmaster's Office, 2003: Spaceplanning to use current furniture and area rugs in new office and to investigate flooring options for use under the rugs

Buck Dorm, 2004; similar to other dorms

Spurr Dorm, 2005; similar to other dorms

UnderMountain Childcare Center, 2005, new interior design, finishes, lighting, furniture, exterior paint, exterior sign design

Allen Theatre, 2005, new carpet specifications

Student Health Services, 2005-2008: new flooring, paint, lighting, furniture and artwork for exam rooms, waiting area, office, corridors and overnight rooms

Faculty Center, 2006: Spaceplanning, new carpet, paint, lighting and furniture for a large work and meeting room, and department head offices

Registrar's Office, 2006; Spaceplanning, new carpet, paint, lighting and furniture in a too-small office to improve the aesthetic and maximize space utilization.

Library, 2006-2007: new carpet, paint and furniture

Academic Office, 2006, new carpet, lighting, paint, furniture

Reference: *Timothy Fulco, Director, Physical Plant, 413 229-1337*



DEERFIELD ACADEMY, Deerfield Ma

Student Lounge and Snack Bar, 1987: Provided finish and furniture specifications to Kuhn Riddle Architects, Amherst, MA for renovations to an existing snack bar.

HAMPSHIRE COLLEGE, Amherst, MA

Prescott House, 1988: Provided finish specifications to Kuhn Riddle Architects, Amherst, MA for renovations to existing student housing.

BLUELINE DESIGN

7



Williston Northampton School, Admissions at the Homestead 2000

HOLYOKE COMMUNITY COLLEGE, Holyoke, MA

House Doctor, with Margo Jones Architects, 2008

Office of Institutional Development, 1995: Programming, space planning, lighting, finishes and furniture were required when the office moved to a new location. A combination of stud partitions and full ht. systems furniture were used.

Offices for Dining Services, 1995: Worked with Kuhn Riddle Architects to provide programming, space planning, lighting, finishes and furniture design when the office planned to move to a new location. The design made use of interesting and unusual materials to complement the architecture of the building. Proceeded through design development only and is currently on hold.

Business Office, 1995: Worked with Kuhn Riddle Architects to assess current and future needs and generate alternative schematic designs for future renovations.

MILTON ACADEMY, Milton, MA

Health Center, 1995: Provided exterior paint design for traditional building with interesting architectural detailing.

MOUNT HOLYOKE COLLEGE, South Hadley, MA

Office of Accounting, Skinner Hall, 1987: Worked with Gillen Kuhn Riddle & Gray to provide programming, finishes and furniture for a renovation to existing offices. Work was phased to be implemented without moving the end user. The design made use of systems furniture to improve conditions in a very crowded office.

BLUELINE DESIGN

8



Westhampton Public Library, designed for LEED Gold Certification, completed Oct 2010. Interior Design, Lighting Design and Exterior Colors by BlueLine Design

NORTHFIELD MOUNT HERMON SCHOOL, Northfield, MA

Except for one or two projects, BlueLine Design was the only interior design firm doing work for the School from 1992-1996. Project scope included exterior paint, interior programming, space planning, lighting design, finishes and furniture. Design development usually involved meeting with a committee comprised of the end users, and deans or administrators involved with the facility, the head of physical plant, and the heads of all the shops involved with construction and maintenance.

Dormitories

Betsey Moody Hall, 1992, with Kuhn Riddle Architects

Hillside House, 1992

East Hall, 1994, with Kuhn Riddle Architects

Overtoun Hall, 1995 with Kuhn Riddle Architects

Administrative Offices

Computer Center at the Old Bookstore, 1994 with Center Street Architects

Phonathon, Holton Hall, 1994, with Center Street Architects

Office of Financial Affairs, Holton Hall, 1994

Office for the Director of Physical Plant, 1994

Classroom Buildings

Palmer Hall, 1994

Sanda Countway Hall, 1992

Billings Hall, 1994 & 1995

Exterior Paint Only

Poet's House, 1993

Dickerson House, 1993

Spencer House, 1993

Marquand Hall, 1994

West Hall, 1995

Other

Gould Hall Dining Room & Lounge, 1992 with Kuhn Riddle Architects

Campus Post Office, 1993, with Kuhn Riddle Architects

Home of the Head of the School, 1994

Schauffler Library, 1996, with Kuhn Riddle Architects

BLUELINE DESIGN

PHILLIPS EXETER ACADEMY, Exeter, N.H.

Jeremiah Smith Hall, 1995 & 1996: Jeremiah Smith Hall houses offices for the Dean, Treasurer, Communications, College Counseling, the Office of Human Resources, and the Campus Post Office. BlueLine Design executed a space planning study which included programming and schematic design, along with a cost estimate for construction, finishes, lighting and furniture, presented in a written report to the facilities manager of the School. Design development based on these recommendations will proceed as funding becomes available.



Office for College of Social and Behavioral Sciences, University of Massachusetts, 2006

9

SPRINGFIELD TECHNICAL COMMUNITY COLLEGE, Springfield, Ma

Vending Area, Building 16, 1996: BlueLine Design designed a space plan to define circulation, vending, eating, and study areas in a basement space, along with specifying finishes, furniture and lighting.

Entry and Food Court, Building 17, 1996: BlueLine Design designed a space plan to define circulation and eating areas, along with specifying finishes, furniture and lighting for the lobby of this classroom building.

Break Area and Conference Room, Building 17, 1996: BlueLine Design designed a space plan to visually and acoustically separate the conference area from the break area, providing finish, furniture and lighting specifications as well.



Williston Northampton School Physical Plant 1999, Interior Architecture, Lighting, Finishes & Furniture

BLUELINE DESIGN

ST. PAUL'S SCHOOL, Concord, N.H.

Dormitories

BlueLine Design provided finish and furniture specifications for the following dormitories:

Armour Hall, 1996

Brewster Hall, 1996, with Goody Clancy & Assoc., Boston, MA

Kittredge Hall, 1996, with Chris Williams Architects, Meredith, N.H.

Other

Wellness Center, 1995: A renovation, by Graham/Meus Architects, Boston, MA, to an existing dormitory to convert it to use as a Wellness Center. BlueLine Design inventoried existing furniture for reuse, as well as specifying finishes and new furniture.

10

WESTFIELD STATE COLLEGE, Westfield, MA

Wellness Center, Ely Hall, 1994: The Wellness Center was built in the basement of the former bowling alley and bar. BlueLine Design did all design drawings, finishes, lighting and furniture.

Community Center, Ely Hall, 1995: A renovation to the existing Campus Center, including space planning, lighting, finishes and furniture.

Parenzo Hall Lobby, 1997: A planned renovation (has not yet been executed) to the existing Lobby of the Administrative Building, including space planning, lighting, finishes, furniture and signage.

Wilson Food Court, Wilson Hall, 1996: A new addition to Wilson Hall to house a dining area, postal boxes, & a Taco Bell. BlueLine Design did all design drawings, finishes, lighting, furniture.

Reference: Dr. Curt Robie, Executive Director Facilities & Operations, 413 572-5280



Berkshire School Library 2007

BLUELINE DESIGN

UNIVERSITY OF MASSACHUSETTS, Amherst, MA

Center for Research on Families, Tobin Hall, 2007-2008. An existing classroom was used for new offices, including a meeting room, closed and open offices. Space planning, lighting, finishes and furniture. *Reference: Wendy Varner, Associate Director 545-3593*

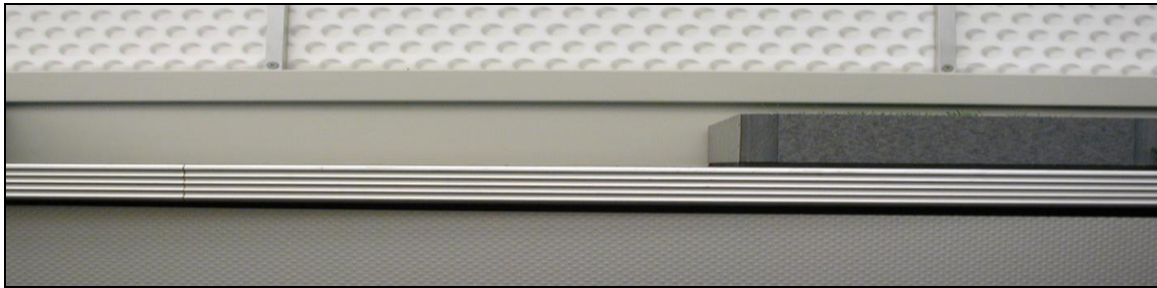
Offices for College of Social and Behavioral Sciences, Draper Hall, 2006. New furniture, lighting design, paint. *Reference: Karen Schoenberger, College of Social and Behavioral Sciences, 545-1753*

Thompson Hall Student Center, 2005, A renovation involving transforming existing classrooms into an internet Café'. Services included space planning, finishes, furniture and lighting. Time Line to complete the design 2 weeks. *Reference: Karen Schoenberger, College of Social and Behavioral Sciences, 545-1753*

Gunness Engineering Student Center, 1989-90: A new addition to the existing Engineering Building, funded by the Gunness Family, designed with Kuhn Riddle Architects.

Fine Arts Center Theater Lobby and Box Office, 1994-95: Plans for renovation to the existing building include an innovative lighting design incorporating the use of neon, new carpet, new design for the ticket office, and plans for the display of posters for upcoming events. Designed with Leland Johnson, lighting designer, and Kuhn Riddle Architects. Won thru competition.

11



WILBRAHAM & MONSON ACADEMY

Student Center, 1997: A renovation to the existing Student Center including the addition of a snack bar, study room and offices, designed with Kuhn Riddle Architects. New space plan, finishes and furniture. Furniture specified and bid by BlueLine Design.

Chamberlin Hall, 1997: An addition to the existing Middle School, designed with Kuhn Riddle Architects, includes classrooms, offices and a multi-purpose room. Furniture specified and bid by BlueLine Design.

Business & Admissions Offices & Lobby, 1998: New carpet for all areas; layouts and specifications.

Rich Hall, 2002: Dormitory, 3 floors each with its own color scheme; finishes and lounge furniture, working directly with the donor for the project.

Student Store, 2005: involves moving the store to a new location: finishes, lighting.

Reference: Karen White, Business Manager, 413 596-6811



UMass Center for Research on Families in Use, 2008



CAD Drawing 2007

BLUELINE DESIGN

WILLISTON NORTHAMPTON SCHOOL, Easthampton, MA

Dormitories

During the summer of the 1996, BlueLine Design met with students in the following dormitories to specify new carpet, paint and lounge furniture, to give each building a 'facelift.' The result has been an enthusiastic reaction by students who got most improvements they asked for, and by the School which got a significant improvement for a minimal expenditure. During the summer of 1997, BlueLine Design was involved in finding original art work, by local artists, for the dormitories which was installed in August:

Clare House

French House

Logan House

Swan House

Conant House

Hathaway House

Sawyer House

Wright House

Memorial Dormitory, 1996, with Banwell White Arnold Hemberger & Partners, Inc. Architects, Lebanon, N.H.: A major renovation to an existing dormitory, including a new ramp and accessible entrance. BlueLine Design participated in design, finishes, furniture and art work.

Ford Dormitory, 1998-99, with Banwell White Arnold Hemberger & Partners, Inc. Architects. Another major renovation to an existing dormitory, including finishes and furniture.

Other

Technical Center, 1997, with Banwell White Arnold Hemberger & Partners, Inc., Architects, Lebanon, N.H.: A renovation to the basement of Memorial Dormitory to house a new Technical Center, and Student Publication Office. BlueLine Design specified finishes, furniture and signage

Campus Center, 1996: BlueLine Design specified furniture for a new snack bar and lounge in this major renovation by Red Hawk Studio Architects, Concord, MA.

English Department, 1997: New finishes, furniture and signage for English Department classrooms located in the "Schoolhouse."

Business Offices, 1998: Architectural changes, finishes, furniture and lighting for the Business Offices located in the "Schoolhouse."

Math Department, 1998: Finishes, furniture and signage for the Math Department located in the "Schoolhouse."

Physical Plant, 1999: Reviewed & modified floorplans, and specified lighting, finishes and furniture for a new wing to house offices for Physical Plant.

Hockey Rink, 1999-2000: Will be working on finishes and furniture for an addition to the existing hockey rink.

The Gym, 1999: Carpet and furniture for central lounge at ground floor.

Admissions, Communications & Development Offices, 1999-2000: Involved in interior space planning, finish, lighting and furniture specification, with Banwell White Arnold Hemberger & Partners, Inc., Architects, Lebanon, N.H.

Reception and Mail Room at the Schoolhouse, August 2011: Interior space planning, finish and furniture specification and the procurement of used furniture for a face track project.

Reference: *Jeff Tannatt, Director Physical Plant, or Bruce Tanguay, Coordinator of Compliance & Special Services, Physical Plant, 413 529-3272*

